

Informe Mensual Área de Producción
EMA MDA CORFO - Hilario Ascasubi, RN 3 km 796
Datos meteorológicos diarios julio 2023

	T max (°C)	T media (°C)	T min (°C)	Pp (mm)	HR max (%)	HR med (%)	HR min (%)	Vel viento max (km/h)	Vel viento med (km/h)	Dirección predominante	Presión media (hPa)	Etp diaria (mm)
1-jul	18	9.9	2	0	94	74.5	46	11	3.6	NNW	1017.3	1.3
2-jul	21	13.8	8	0	83	68.9	51	19	5.1	NNW	1011.3	1.5
3-jul	18	9.8	4	0	96	80.5	55	11	1.7	NNW	1013.2	1.2
4-jul	19	11.2	4	0.8	98	81.4	41	16	4.6	NNW	1010.7	1.5
5-jul	13	8.0	4	0	68	53.4	35	19	7.7	NNW	1015.1	1.6
6-jul	12	6.5	1	0	78	60.2	39	19	5.6	NNW	1016.7	1.4
7-jul	14	5.4	-1	0	88	68.5	41	10	1.5	NNW	1018.4	1.1
8-jul	11	7.9	6	2.4	93	84.9	71	13	2.5	NNW	1017.4	0.5
9-jul	13	8.0	3	0	97	84.5	60	16	4.8	NNW	1016.5	1.2
10-jul	12	3.7	-2	0.2	98	83.7	49	19	4.3	NNW	1020.3	1.2
11-jul	9	2.2	-3	0	97	89.6	62	13	3.3	NNW	1023.4	0.7
12-jul	10	4.5	-1	0	97	87.5	66	11	2.0	NNW	1024.1	0.7
13-jul	10	3.8	-1	0	98	84.7	61	19	5.2	NNW	1024.0	1.2
14-jul	13	5.3	0	0	95	81.4	53	13	4.8	NNW	1016.5	1.1
15-jul	11	5.0	-1	0	93	75.2	50	31	9.3	NNW	1015.3	1.5
16-jul	11	3.3	-2	0	92	77.1	52	27	10.6	NNW	1023.0	1.5
17-jul	9	0.8	-5	0	89	65.3	29	16	4.0	NNW	1028.1	1.3
18-jul	12	4.1	-7	0	84	59.6	28	16	4.2	NNW	1027.9	1.5
19-jul	15	10.7	8	0	59	51.5	42	21	11.0	NNW	1020.5	2.7
20-jul	18	10.9	5	0	81	59.3	37	16	7.6	NNW	1012.3	2.5
21-jul	15	9.9	6	0	90	74.3	60	18	3.9	NNW	1004.1	0.9
22-jul	14	8.4	5	0	89	77.4	53	19	5.3	NNW	1008.4	0.8
23-jul	12	6.1	1	0	90	72.2	41	43	9.1	NNW	1023.6	1.7
24-jul	12	5.8	2	0	93	76.8	50	16	3.1	NNW	1029.6	1
25-jul	10	5.9	1	0.2	91	83.8	70	18	4.7	NNW	1018.6	0.7
26-jul	12	7.3	2	0.2	95	78.2	53	24	9.3	NNW	1019.0	1.4
27-jul	6	3.3	-1	0.6	94	88.3	77	8	1.7	NNW	1023.5	0.6
28-jul	13	7.5	1	0	97	83.1	63	13	3.8	NNW	1024.2	1.3
29-jul	20	14.5	10	0	74	57.7	38	19	6.9	NNW	1012.1	1.9
30-jul	21	14.0	7	0	74	54.0	28	16	4.8	NNW	1014.8	2.2
31-jul	22	12.8	4	0	81	63.6	27	18	5.6	NNW	1014.6	1.9
	22.0	7.4	-7.0	4.4	98.0	73.6	27.0	43.0	5.2	WNW	1018.2	41.6

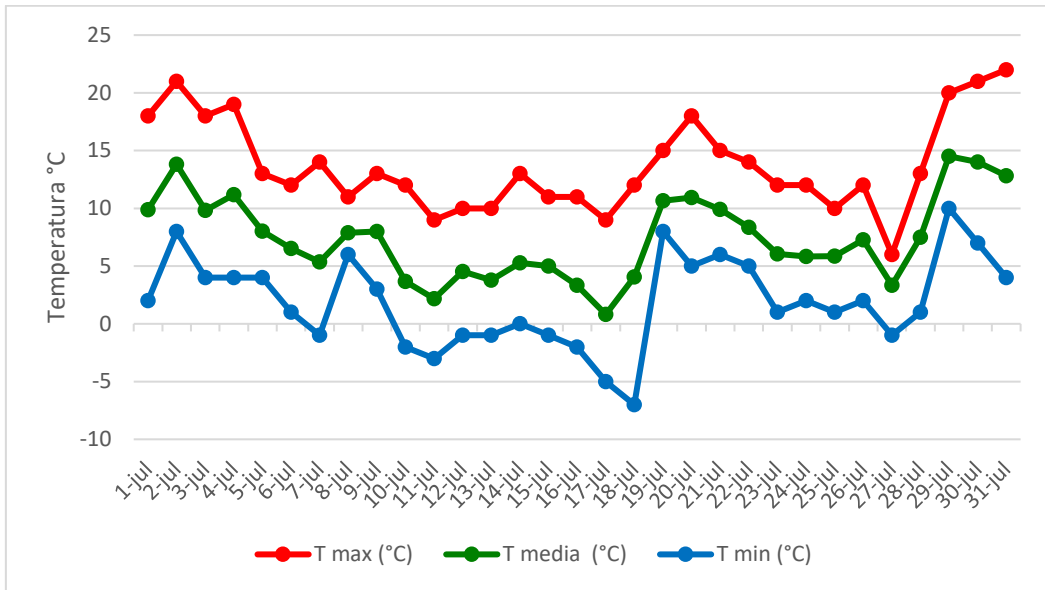


Fig. 1. Temperaturas máxima, mínima y media diarias.

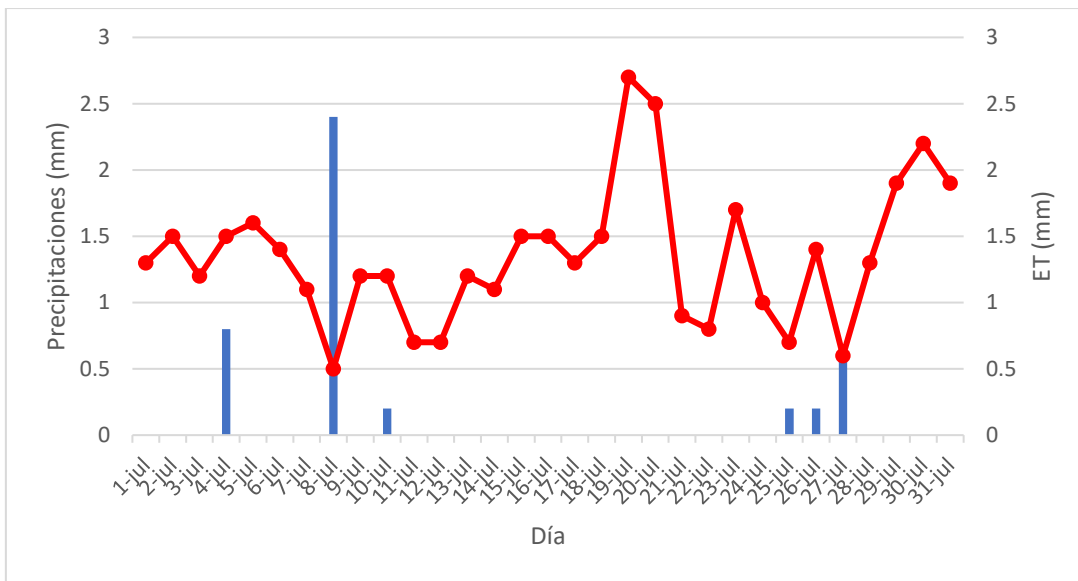


Fig. 2. Precipitaciones y evapotranspiración diaria.

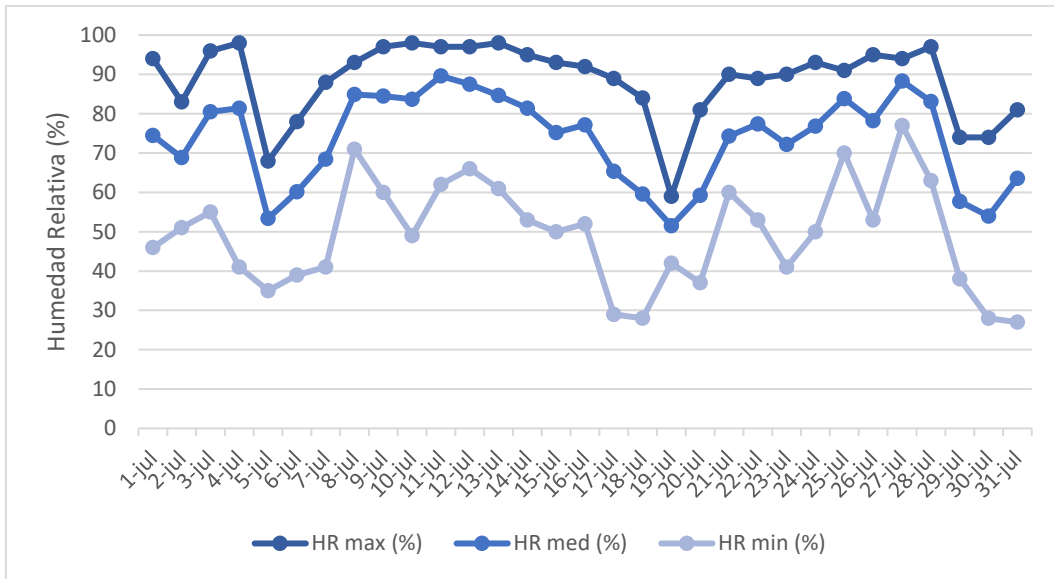


Fig. 3. Humedad relativa máxima, media y mínima diaria.

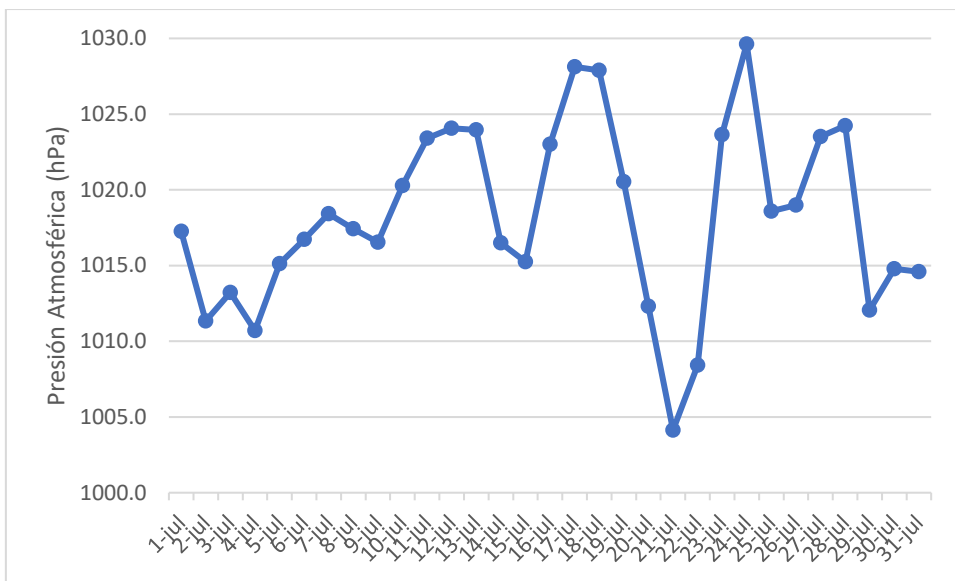


Fig. 4. Presión atmosférica media diaria.

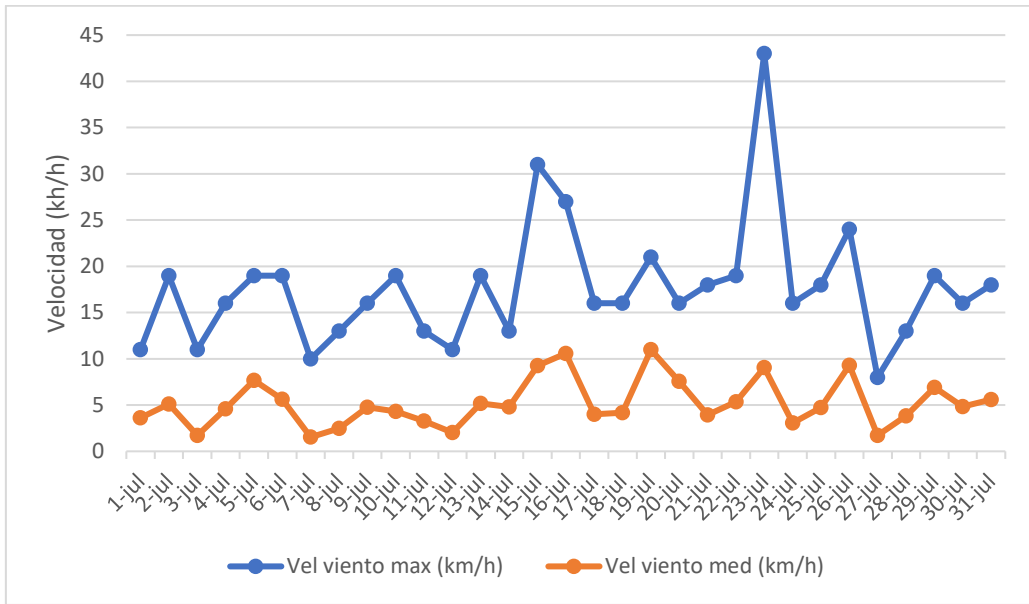


Fig. 5. Velocidad del viento máxima y media diaria.

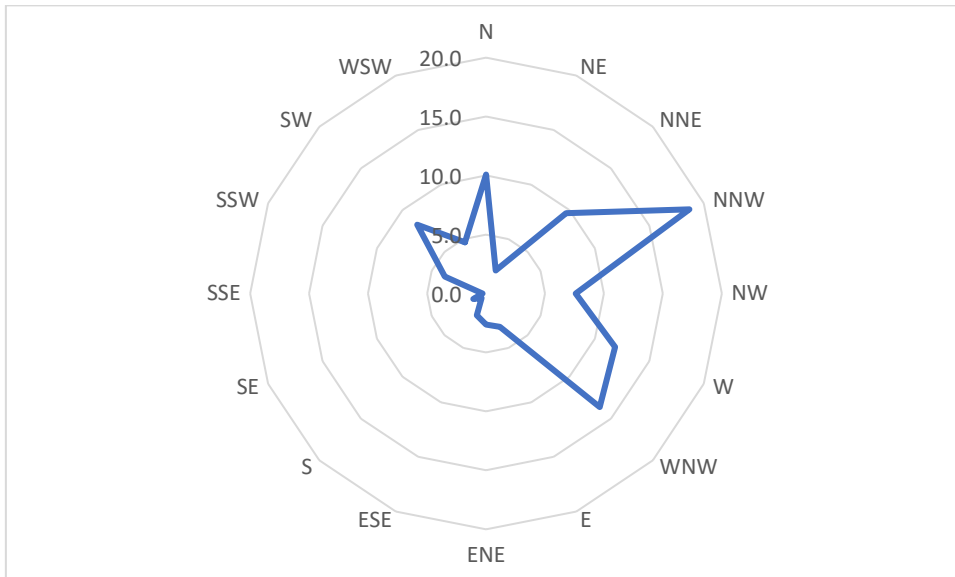


Fig. 6. Frecuencia por dirección de viento.

Contacto:

Ing. Agrónoma Laura Vallejos Bubicz, MP: 03519

Área Producción, CORFO Río Colorado

Calle 5 N 1294

(8148) Pedro Luro

lvallejos@corfo.gob.ar, cel 2915752494