

Informe Mensual Área de Producción
EMA MDA CORFO - Hilario Ascasubi, RN 3 km 796
Datos meteorológicos diarios junio 2023

	T max (°C)	T media (°C)	T min (°C)	Pp (mm)	HR max (%)	HR med (%)	HR min (%)	Vel viento max (km/h)	Vel viento med (km/h)	Dirección predominante	Presión media (hPa)	Etp diaria (mm)
1-jun	18	9.9	2	0	90	71.3	45	13	3.3	E	1015.3	1
2-jun	21	14.9	8	0	91	66.7	45	18	5.2	NNW	1009.2	1.5
3-jun	19	10.5	3	2.6	94	74.0	48	24	5.4	NNW	1012.4	1.7
4-jun	14	8.6	-1	0	82	57.7	32	23	8.8	W	1021.8	2.3
5-jun	16	8.4	-2	0	82	58.2	32	14	5.0	NNW	1017.8	1.7
6-jun	18	13.3	8	0	71	61.2	51	18	6.8	WNW	1009.6	1.4
7-jun	16	8.5	0	0	84	59.6	35	11	2.9	WNW	1015.2	1.3
8-jun	24	17.5	9	0	81	62.7	44	19	9.9	NNW	1001.1	2.5
9-jun	21	10.4	3	0	56	39.5	25	35	9.6	WSW	1009.1	3
10-jun	12	6.2	1	0	72	52.5	36	32	12.4	SW	1015.8	2.4
11-jun	11	2.9	-4	0	76	56.0	29	18	8.6	W	1021.2	1.7
12-jun	13	4.3	-2	0	80	65.5	40	19	5.0	W	1027.8	1.5
13-jun	15	5.5	-3	0	77	55.1	29	16	4.7	NNW	1027.1	1.7
14-jun	15	8.4	2	0	61	45.7	29	16	6.2	NNW	1020.1	2
15-jun	18	11.0	6	0	81	52.9	34	18	7.2	NNW	1020.1	2.3
16-jun	11	8.1	2	3.4	95	89.5	81	16	6.0	SSW	1027.1	0.6
17-jun	11	3.6	-3	0.4	96	82.4	51	8	2.3	W	1026.9	1
18-jun	12	5.8	0	0	93	81.5	63	14	3.8	NNW	1019.9	1.1
19-jun	11	9.1	7	0	91	80.2	72	26	11.5	ESE	1025.9	0.8
20-jun	12	9.8	7	0	96	85.9	72	21	5.7	E	1025.4	0.7
21-jun	12	7.3	3	0	97	91.3	79	10	2.8	NNW	1017.9	0.7
22-jun	16	10.2	5	1.8	98	87.4	66	16	6.1	NNW	1007.8	0.9
23-jun	16	11.8	9	0	93	85.3	67	18	7.7	WNW	1003.7	0.9
24-jun	15	11.8	9	5.4	97	87.1	74	19	8.5	WNW	1006.6	0.7
25-jun	13	7.7	4	1.8	92	86.4	76	14	3.2	NNE	1009.5	0.3
26-jun	15	10.5	6	0	80	68.2	50	23	8.1	WNW	1010.5	1.5
27-jun	16	8.5	3	0	84	68.7	37	27	6.9	W	1014.4	1.7
28-jun	13	5.8	1	0	95	79.0	59	21	6.0	SW	1023.6	1.3
29-jun	15	6.4	2	0	96	81.8	49	16	3.2	NNE	1023.2	1.1
30-jun	13	6.0	-1	0	95	81.5	63	8	1.9	NNW	1021.2	0.7
	24.0	8.8	-4.0	15.4	98.0	70.5	25.0	35.0	6.2	NNW	1016.9	42.0

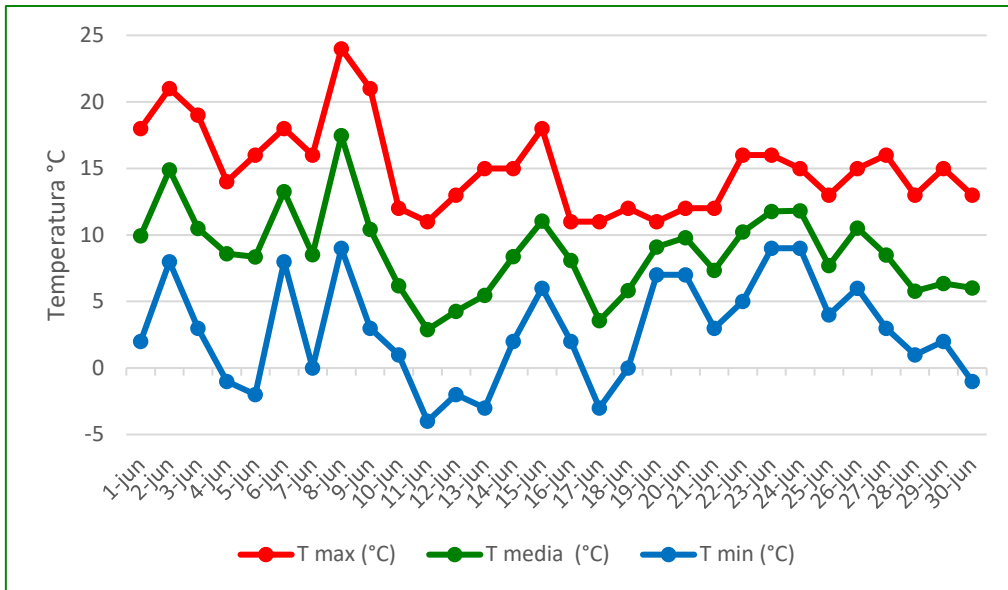


Fig. 1. Temperaturas máxima, mínima y media diarias.

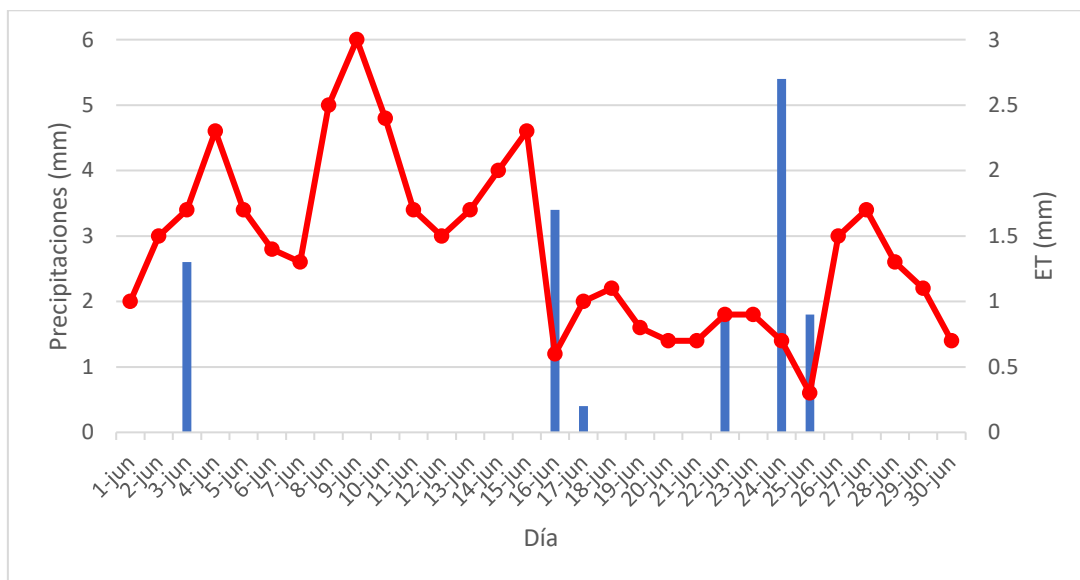


Fig. 2. Precipitaciones y evapotranspiración diaria.

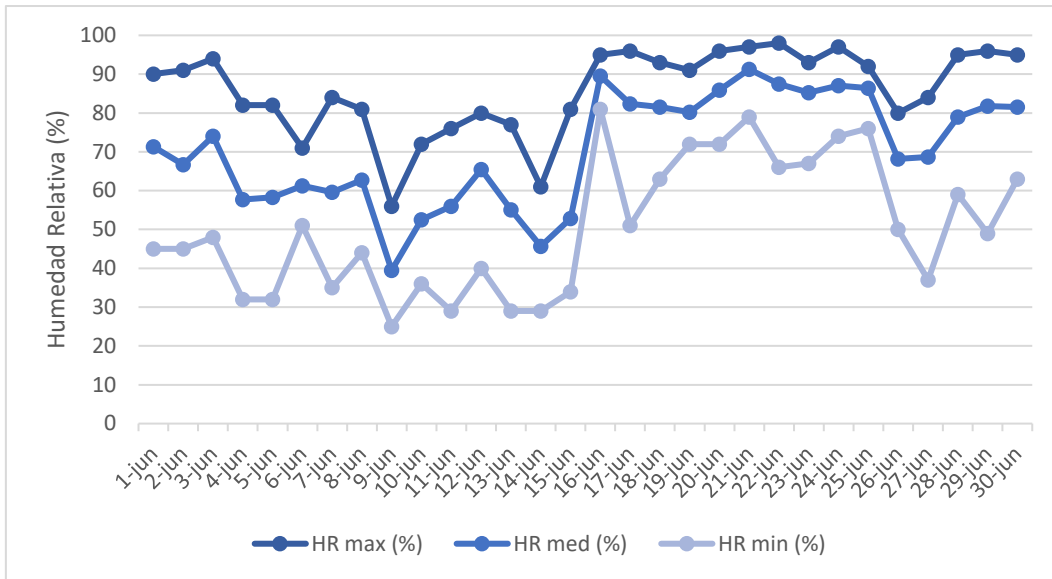


Fig. 3. Humedad relativa máxima, media y mínima diaria.

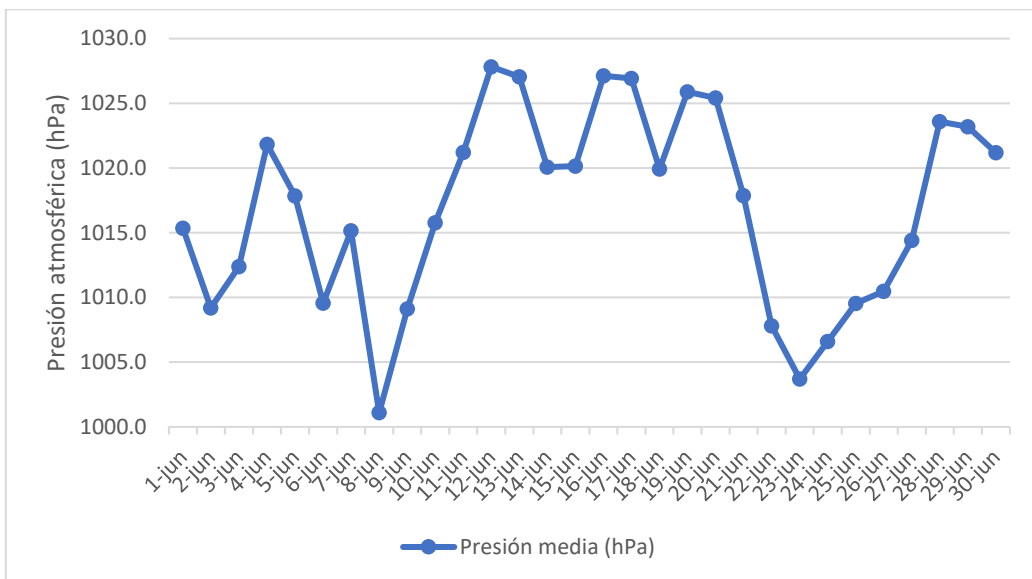


Fig. 4. Presión atmosférica media diaria.

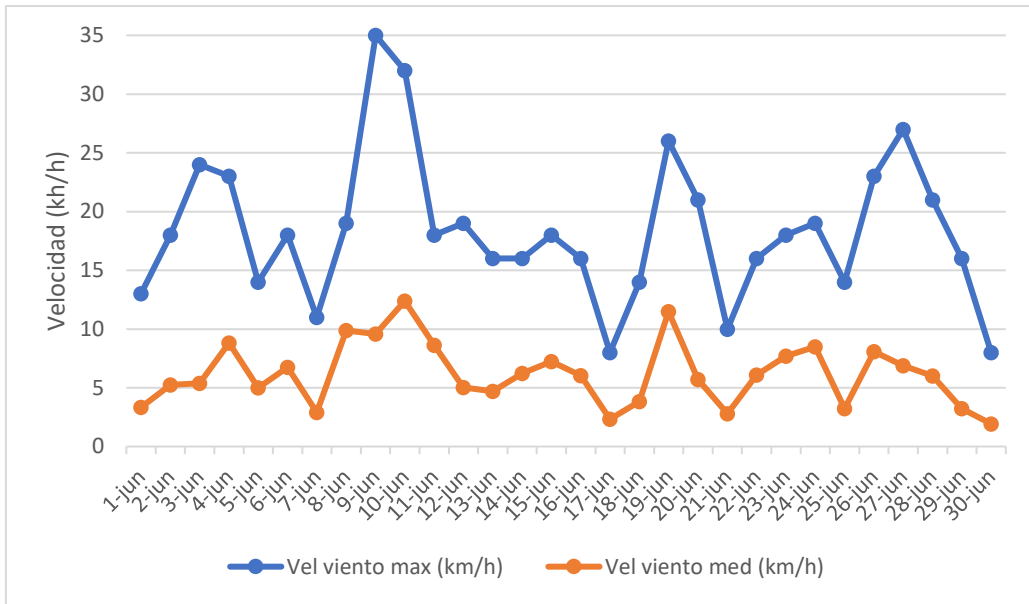


Fig. 5. Velocidad del viento máxima y media diaria.

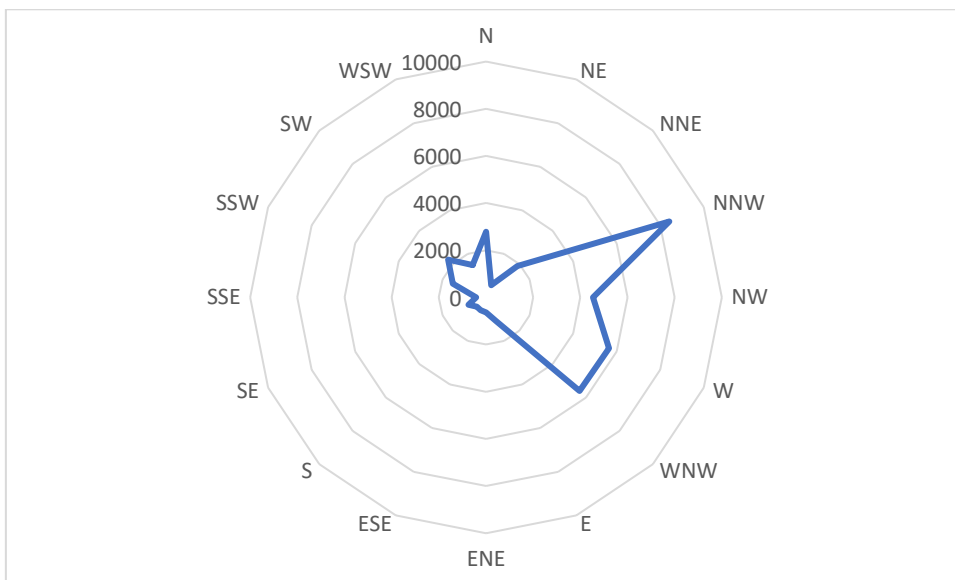


Fig. 6. Frecuencia por dirección de viento.

Contacto:

Ing. Agrónoma Laura Vallejos Bubicz, MP: 03519

Área Producción, CORFO Río Colorado

Calle 5 N 1294

(8148) Pedro Luro

vallejos@corfo.gob.ar

2915752494