

Informe Mensual Área de Producción
EMA MDA CORFO - Hilario Ascasubi, RN 3 km 796
Datos meteorológicos diarios septiembre 2023

	T max (°C)	T media (°C)	T min (°C)	Pp (mm)	HR max (%)	HR med (%)	HR min (%)	Vel viento max (km/h)	Vel viento med (km/h)	Dirección predominante	Presión media (hPa)	Etp diaria (mm)
1-sep	24	15.6	9	0	38	27.8	17	29	9.9	NNW	1006.9	5
2-sep	15	9.2	4	0	82	44.2	22	16	3.9	W	1015.3	2.6
3-sep	14	8.4	3	0.8	94	73.0	38	19	5.0	W	1016.7	1.2
4-sep	13	4.8	-2	0.2	96	71.9	37	18	4.4	SSW	1024.0	2.1
5-sep	15	7.0	0	0	90	66.4	35	16	3.7	NNW	1025.4	2.1
6-sep	9	7.9	6	1.4	88	71.2	52	19	7.1	ENE	1023.1	0.9
7-sep	13	8.1	6	8.6	96	84.8	71	16	5.2	E	1017.3	1.1
8-sep	18	10.8	3	0	92	65.7	31	19	6.5	W	1013.7	3.4
9-sep	20	12.5	4	0	82	58.7	35	14	5.1	NNW	1012.4	2.8
10-sep	19	13.5	8	0	80	62.5	34	16	3.6	NNW	1009.2	2.1
11-sep	19	12.2	7	6	92	74.1	30	37	10.3	W	1008.0	2.5
12-sep	19	10.3	2	0	74	48.4	21	19	7.3	W	1016.8	3.5
13-sep	21	11.4	3	0	71	47.6	22	19	4.9	NNW	1018.0	3.6
14-sep	21	13.7	6	0	71	54.1	41	32	10.2	NNW	1008.6	3.3
15-sep	27	20.5	15	0	62	36.8	24	40	18.0	W	998.2	5.8
16-sep	21	14.8	9	0.4	80	38.8	16	29	9.1	W	1002.0	4.5
17-sep	15	10.7	4	0	81	43.5	26	23	9.1	W	1014.1	3.4
18-sep	16	7.7	0	0	95	68.2	22	21	6.5	SW	1023.2	3.4
19-sep	19	9.7	2	0	93	67.4	29	16	3.9	E	1022.5	2.6
20-sep	19	11.4	5	0	96	77.6	43	27	6.2	E	1019.6	2.9
21-sep	21	14.6	6	0	88	71.7	43	24	8.4	SE	1012.3	3.1
22-sep	13	7.7	2	3.6	95	82.1	55	19	6.0	E	1018.5	1.7
23-sep	22	13.2	6	1	96	69.2	25	24	7.7	WNW	1013.8	3.8
24-sep	19	9.9	1	0	94	65.3	31	16	2.7	E	1018.3	3.5
25-sep	22	12.9	4	0	85	58.3	26	14	3.6	NNE	1016.5	3.9
26-sep	20	13.3	7	0	79	56.7	29	18	4.6	NNW	1016.2	3.6
27-sep	24	14.6	6	0	82	43.0	14	24	7.1	WNW	1013.5	4.4
28-sep	21	14.4	8	0	87	40.8	26	24	8.7	SSW	1015.9	4
29-sep	16	9.3	1	0	91	67.8	31	24	9.3	SSW	1027.4	3.5
30-sep	19	7.2	-3	0	98	71.5	26	16	2.9	E	1022.9	3.5
	27.0	11.2	-3.0	22.0	98.0	60.3	14.0	40.0	6.7	W	1015.7	93.8

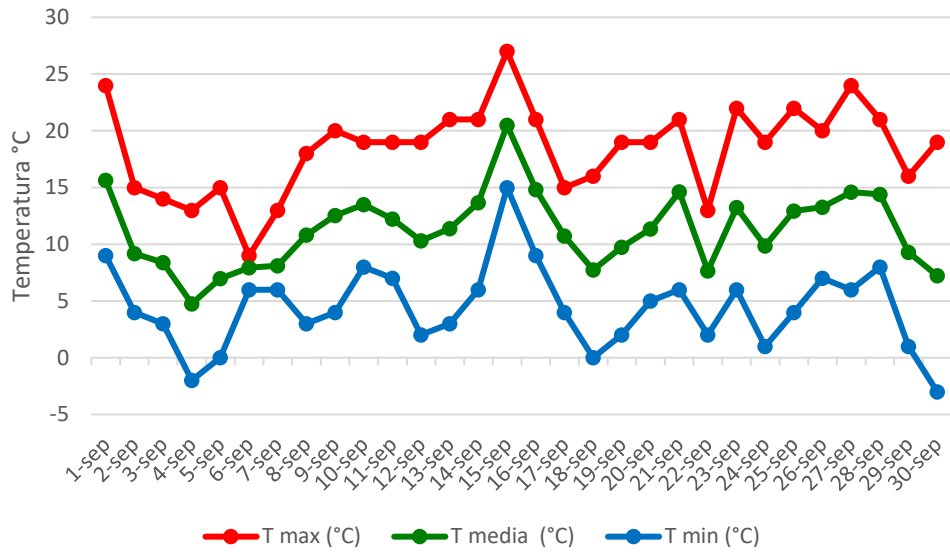


Fig. 1. Temperaturas máxima, mínima y media diarias.

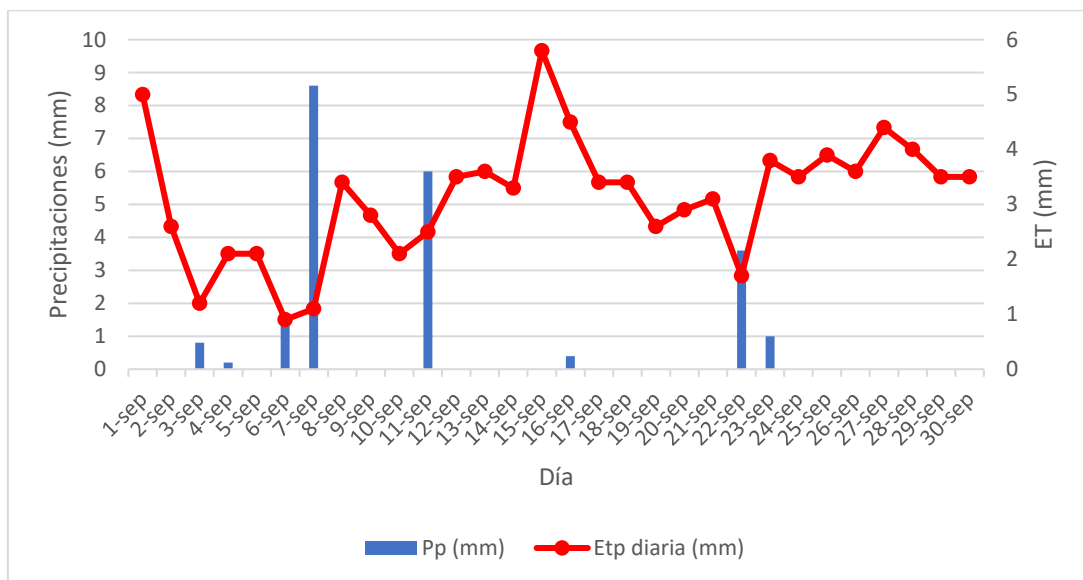


Fig. 2. Precipitaciones y evapotranspiración diaria.

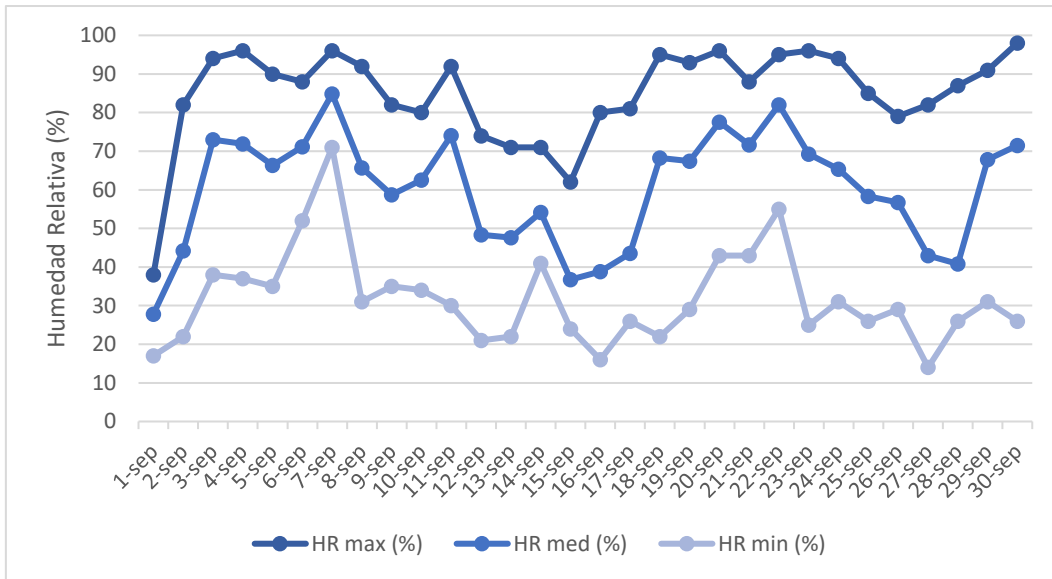


Fig. 3. Humedad relativa máxima, media y mínima diaria.

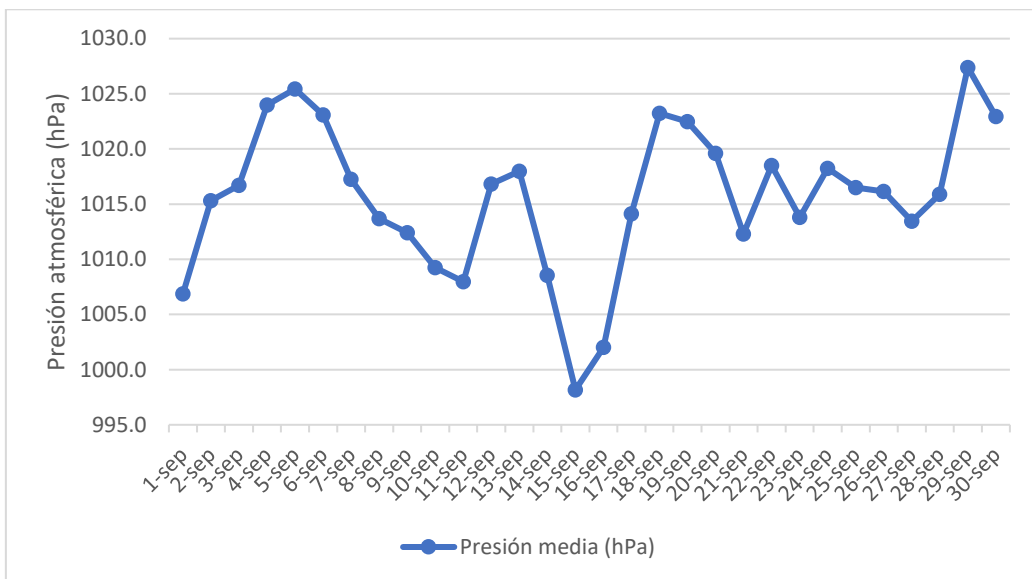


Fig. 4. Presión atmosférica media diaria.

