

Informe Mensual Área de Producción
EMA MDA CORFO - Hilario Ascasubi, RN 3 km 796
Datos meteorológicos diarios diciembre 2023

	T max (°C)	T media (°C)	T min (°C)	Pp (mm)	HR max (%)	HR med (%)	HR min (%)	Vel viento max (km/h)	Vel viento med (km/h)	Dirección predominante	Presión media (hPa)	Etp diaria (mm)
1-dic	33	26.1	16	0	65	36.5	12	31	8.1	W	1003.6	7.6
2-dic	23	16.9	9	0	92	55.5	22	55	11.1	SSW	1011.3	6.5
3-dic	22	14.1	4	0	86	49.6	17	39	9.3	SSW	1021.0	6.8
4-dic	28	17.8	8	0	77	43.6	14	32	5.6	NNE	1021.3	7.3
5-dic	27	18.9	14	0	77	54.8	32	34	6.4	NNW	1015.9	5.3
6-dic	26	18.5	12	0	88	70.9	44	24	4.7	E	1013.1	4.7
7-dic	27	18.1	9	0	97	73.1	40	37	8.4	E	1016.8	5.9
8-dic	28	20.1	12	0	89	61.2	37	43	9.6	E	1017.3	6.9
9-dic	31	22.8	14	1	80	57.4	17	37	8.1	NNW	1012.4	5.6
10-dic	35	23.1	10	0	96	52.0	11	27	4.2	NNE	1011.6	7.3
11-dic	35	27.1	22	0	62	41.7	24	39	10.3	NNW	1004.9	7.5
12-dic	28	21.4	12	0.2	86	61.2	44	50	8.5	SE	1008.3	3.8
13-dic	28	20.1	10	0	90	51.7	20	37	7.4	E	1009.3	7.9
14-dic	33	21.7	15	32.4*	92	58.5	19	34	6.8	NNW	1003.0	4
15-dic	32	23.0	15	0	93	48.1	15	27	7.6	WNW	1005.1	7.1
16-dic	27	21.7	18	80.6	96	89.2	71	60	9.2	E	1003.1	0.8
17-dic	28	21.2	12	0	94	62.2	23	48	13.3	W	1006.4	7.6
18-dic	19	13.6	8	0	87	65.4	43	40	10.7	SSW	1022.5	5
19-dic	19	13.2	7	0.6	90	69.1	46	32	6.6	E	1024.4	4.8
20-dic	18	14.7	12	21	96	84.6	67	23	3.5	NNE	1019.6	2
21-dic	30	21.3	12	0	95	68.4	34	23	4.1	WNW	1013.2	6.7
22-dic	33	25.0	17	0	89	60.5	22	23	5.3	E	1008.4	6.9
23-dic	27	21.3	15	0	93	75.4	55	32	10.3	SE	1011.1	6.7
24-dic	33	20.3	13	14.6	97	74.6	20	34	4.8	E	1010.9	4.7
25-dic	28	19.6	11	0	96	62.4	31	21	4.4	SSW	1017.2	6.4
26-dic	28	20.8	15	0	87	61.1	32	40	11.2	SE	1016.3	6.7
27-dic	34	23.9	15	0	94	65.6	33	32	6.3	NW	1006.1	6.6
28-dic	30	23.0	15	0	94	63.2	25	42	8.0	SSW	1003.8	7.2
29-dic	23	17.2	13	0	90	61.1	30	32	8.3	SE	1016.8	5.9
30-dic	31	20.9	9	0	87	54.2	24	19	3.9	NNW	1015.8	6.9
31-dic	32	24.5	20	0	59	47.7	37	24	6.2	NNW	1011.2	4.7
	35.0	20.4	4.0	150.4	97.0	60.7	11.0	60.0	7.5	E	1012.3	183.8

*INTA H. Ascasubi

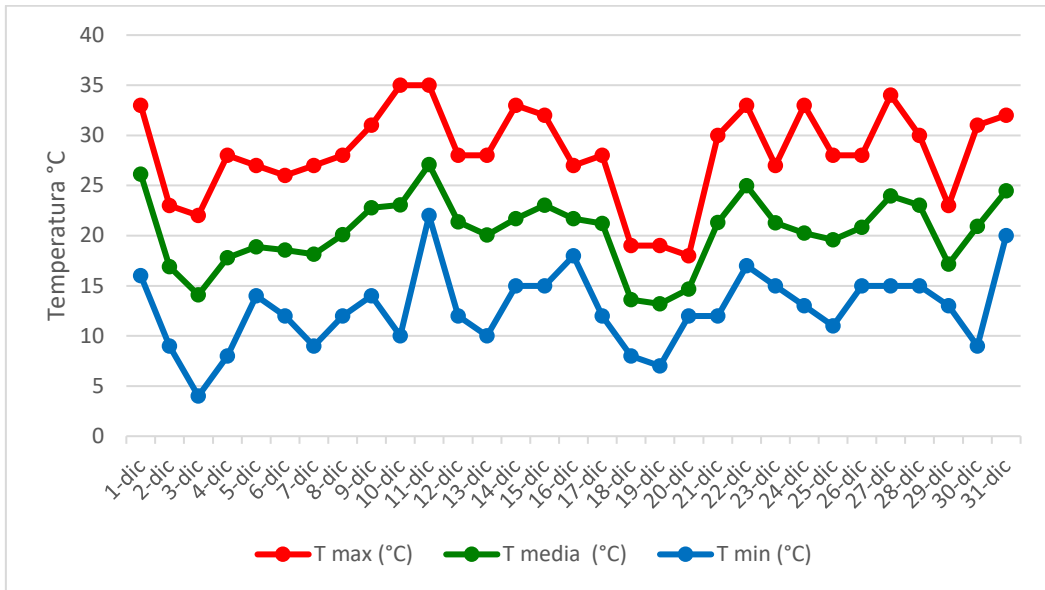


Fig. 1. Temperaturas máxima, mínima y media diarias.

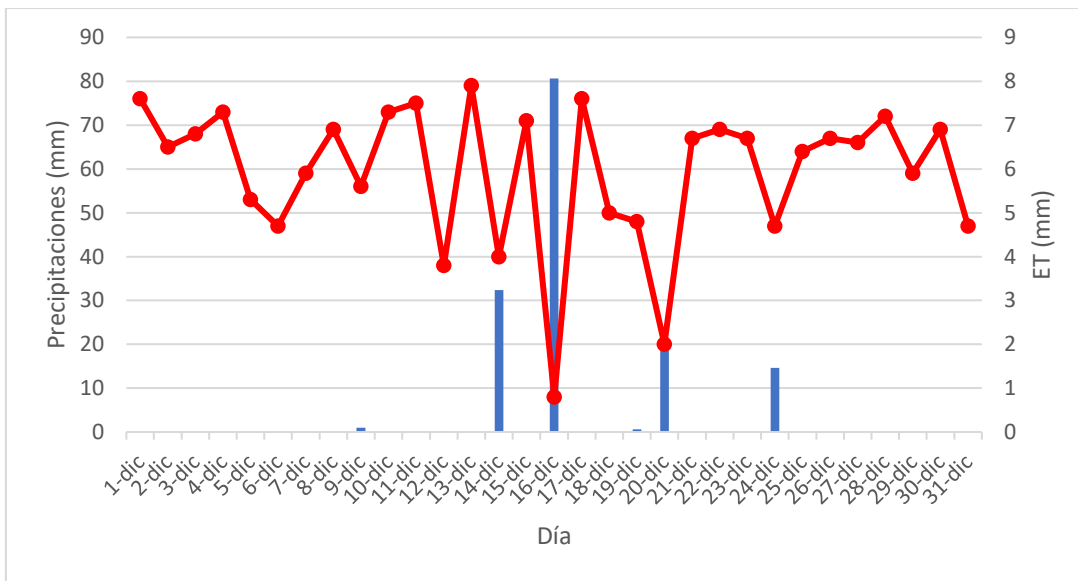


Fig. 2. Precipitaciones y evapotranspiración diaria.

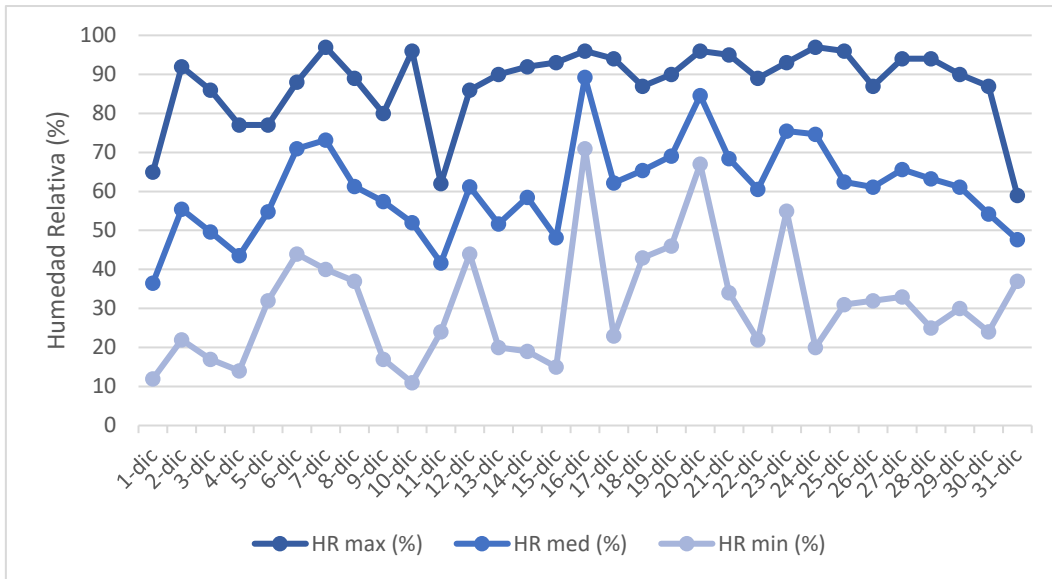


Fig. 3. Humedad relativa máxima, media y mínima diaria.

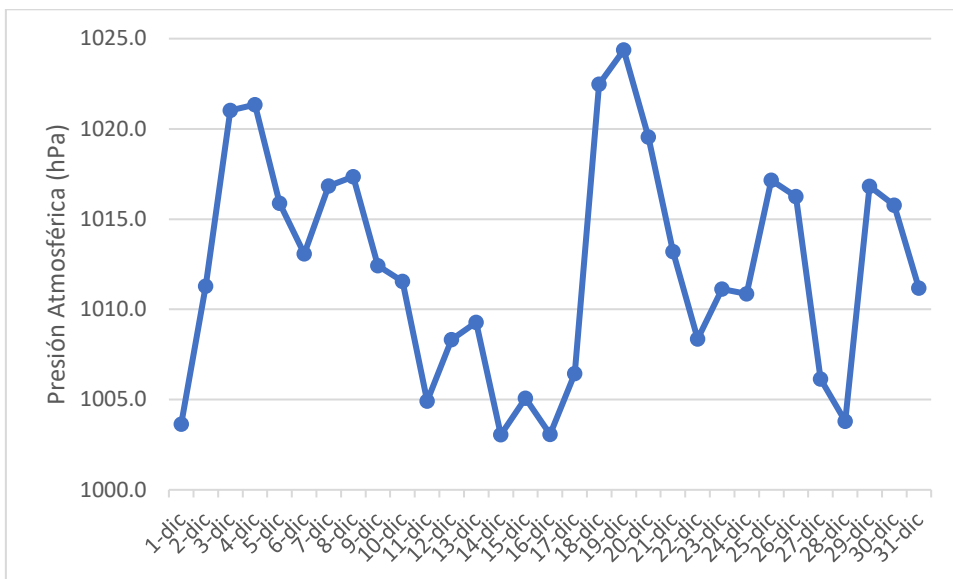


Fig. 4. Presión atmosférica media diaria.

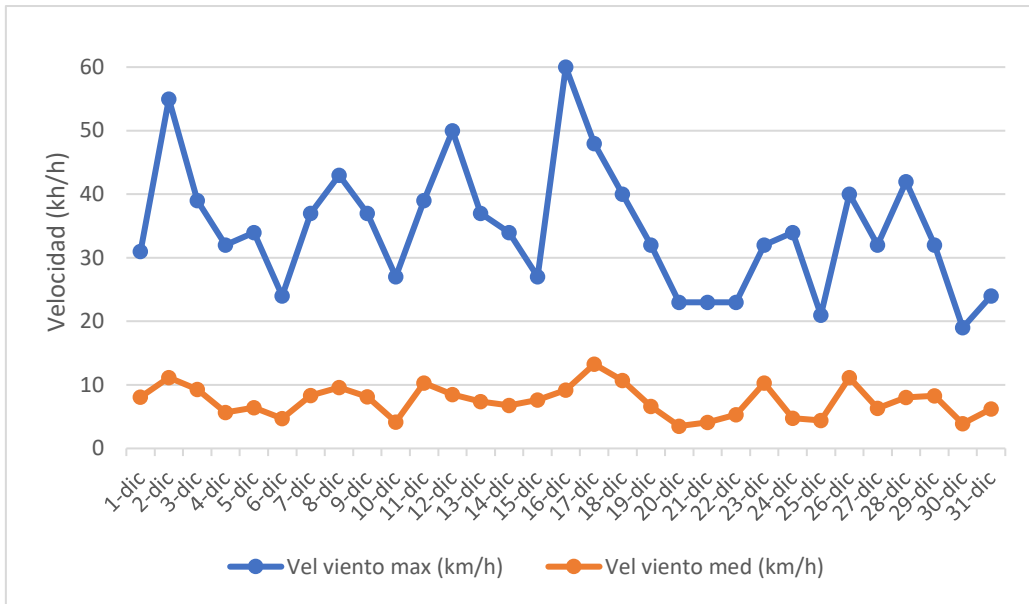


Fig. 5. Velocidad del viento máxima y media diaria.

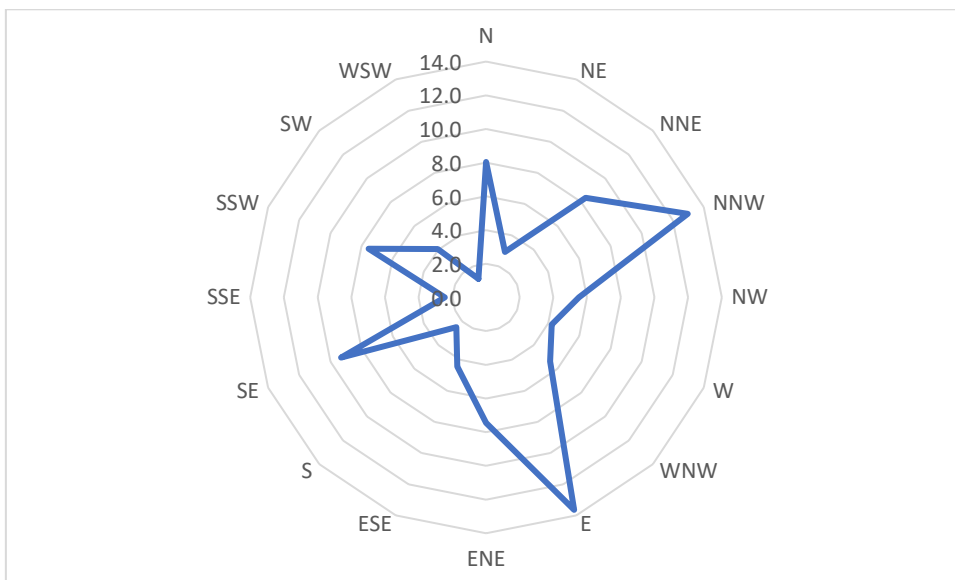


Fig. 6. Frecuencia por dirección de viento.

Contacto:

Área Producción, CORFO Río Colorado

Calle 5 N 1294

(8148) Pedro Luro

produccion.corfo@gmail.com